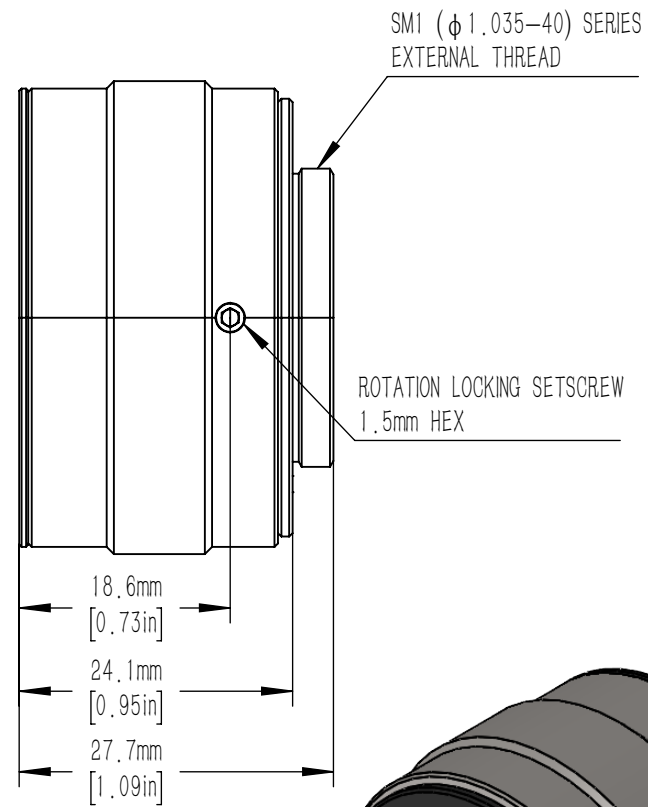
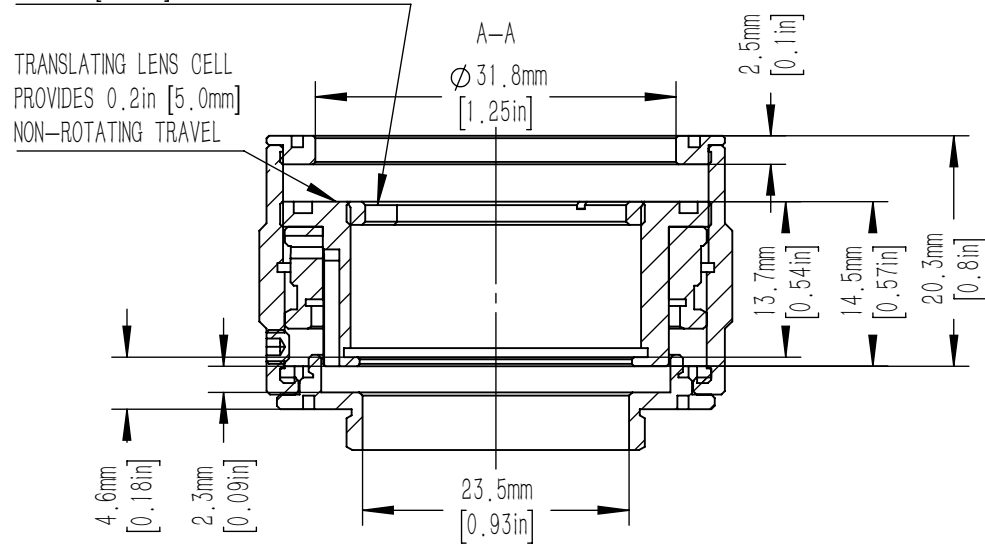


SM1 ($\phi 1.035''-40$) SERIES
 INTERNALLY THREADED LENS CELL
 11.7mm [0.46in] MAXIMUM OPTIC THICKNESS
 SM1 RETAINING RING (INCLUDED)
 2.0mm [0.08in] THICK
 23.0mm [0.91in] CLEAR APERTUR



DRAWING PROJECTION				CSSB1-ST						
DRAWN	NIC	DATE	21/October/2025							HIGH-RESOLUTION SM1 TELESCOPING SLEEVE
APPROVAL	DICK	DATE	21/October/2025	THE DRAWINGS ARE ONLY FOR TYPE SELECTION INFORMATION		FOLLOW THE PARTS		0.040	3.2	
							shop.zolix.com.cn			